

*Signature Series* **MOTORS**

**Frames 48 - 256T**

**Features:**

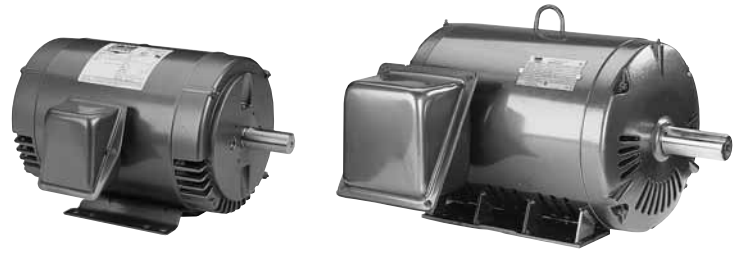
- Industry leading 1.25 service factor\*
- Two levels of premium efficiency - P efficiency codes meet and B efficiency codes exceed the energy efficiency requirements of the United States and Canada.
- Nameplated for 50 Hz and 208 V/60 Hz Operation – See “Notes” column.
- Continuous Duty
- Inverter-Rated
- Premium Insulation Systems –  
48 & 56 frames: Class B  
143T-215T frames: Class F
- UL Recognized Component Listing and CSA
- Warranty (sine-wave power & inverter power) –  
48 & 56 frames: 18 months from date of manufacture and 12 months from date of installation which ever period expires first.  
143T-256T frames: 30 months from date of manufacture and 24 months from date of installation which ever period expires first.

**Applications:**

For use where water and dust exposure is minimal. Ideally suited for use on pumps, compressors, blowers, fans and other standard industrial applications.



\* P and B efficiency codes. Information subject to change without notice.



**ULTIMATE E® MOTORS**

**Frames 284T - 449T**

**Features:**

- Industry leading 1.25 service factor through 200 HP\*
- Superior speed-torque curves - most models\* nameplated Design B & C - see “Notes” column.
- Two levels of premium efficiency - P efficiency codes meet and B efficiency codes exceed the energy efficiency requirements of the United States and Canada.
- Nameplated for 50 Hz and 208 V/60 Hz Operation – See “Notes” column.
- Continuous Duty
- Inverter-Rated
- Premium Class F Plus Insulation system
- Y-delta start capability frames 284T-449T
- UL Recognized Component Listing and CSA certified
- Warranty (sine-wave power) –  
284T-449T frames: 60 months from date of manufacture and 54 months from date of installation which ever period expires first.  
Inverter Power: 30 months from date of manufacture and 24 months from date of installation which ever period expires first.
- Shielded ball bearing for direct coupled applications. Contact your local sales office for belted applications.

**FOOT MOUNT**

HP	SYN RPM	Frame	FL Nom Eff (%)	SF	Volts	Model Number	Product Number	Notes (see page 442)	Approx Shpg Wght (lbs)	List Price	Mult Sym
1/4	1800	48	62.0	1.35	230/460	SPD4S0.25T61	<b>LM24866</b>	H, V	19	\$213	LT-1A
1/3	3600	56	66.0	1.35	230/460	SRD2S0.33T61	<b>LM24867</b>	H, V	18	217	LT-1A
	1800	<b>56</b>	<b>67.0</b>	<b>1.35</b>	<b>230/460</b>	<b>SRD4S0.33T61</b>	<b>LM24152</b>	H, W	<b>15</b>	<b>231</b>	<b>LT-1A</b>
	1200	56	62.0	1.35	230/460	SRD6S0.33T61	<b>LM24868</b>	H, W	19	366	LT-1A
1/2	3600	56	66.0	1.25	230/460	SRD2S0.5T61	<b>LM24869</b>	H, V	22	231	LT-1A
	1800	<b>56</b>	<b>70.0</b>	<b>1.25</b>	<b>230/460</b>	<b>SRD4S0.5T61</b>	<b>LM24098</b>	H, W	<b>17</b>	<b>265</b>	<b>LT-1A</b>
	1200	<b>56</b>	<b>68.0</b>	<b>1.25</b>	<b>230/460</b>	<b>SRD6S0.5T61</b>	<b>LM24146</b>	H	<b>22</b>	<b>404</b>	<b>LT-1A</b>
3/4	3600	56	74.0	1.25	230/460	SRD2S0.75T61	<b>LM24870</b>	H, V	21	272	LT-1A
	1800	<b>56</b>	<b>75.5</b>	<b>1.25</b>	<b>230/460</b>	<b>SRD4S0.75T61</b>	<b>LM24099</b>	H, V	<b>20</b>	<b>295</b>	<b>LT-1A</b>
	1200	<b>56</b>	<b>76.5</b>	<b>1.15</b>	<b>230/460</b>	<b>SRD6S0.75T61</b>	<b>LM24162</b>	H, W	<b>26</b>	<b>437</b>	<b>LT-1A</b>
1	3600	<b>56</b>	<b>74.0</b>	<b>1.25</b>	<b>230/460</b>	<b>SRD2S1T61</b>	<b>LM24155</b>	H, W	<b>24</b>	<b>315</b>	<b>LT-1A</b>
	1800	<b>56</b>	<b>76.5</b>	<b>1.15</b>	<b>230/460</b>	<b>SRD4S1T61</b>	<b>LM24111</b>	H	<b>22</b>	<b>306</b>	<b>LT-1A</b>
	1800	143T	84.0	1.15	230/460	SSD4B1T61	<b>LM24871</b>	H, V	35	446	LT-1E
	1800	143T	<b>82.5</b>	<b>1.25</b>	<b>230/460</b>	<b>SSD4P1T61</b>	<b>LM24116</b>	H, W	<b>34</b>	<b>319</b>	<b>LT-1B</b>
	1200	56H	75.5	1.15	230/460	SRD6S1T61	<b>LM24872</b>	H, W	29	416	LT-1A
	1200	145T	<b>80.0</b>	<b>1.25</b>	<b>230/460</b>	<b>SSD6P1T61</b>	<b>LM24123</b>	K, V	<b>48</b>	<b>452</b>	<b>LT-1B</b>
	900	182T	<b>72.0</b>	<b>1.15</b>	<b>230/460</b>	<b>SSD8S1T61</b>	<b>LM24873</b>	H	<b>55</b>	<b>563</b>	<b>LT-1A</b>
1 1/2	3600	56	80.0	1.15	230/460	SRD2S1.5T61	<b>LM24874</b>	H, W	23	353	LT-1A
	3600	143T	<b>82.5</b>	<b>1.25</b>	<b>230/460</b>	<b>SSD2P1.5T61</b>	<b>LM24150</b>	H, V	<b>28</b>	<b>380</b>	<b>LT-1B</b>
	1800	<b>56H</b>	<b>80.0</b>	<b>1.15</b>	<b>230/460</b>	<b>SRD4S1.5T61</b>	<b>LM24117</b>	H, W	<b>28</b>	<b>324</b>	<b>LT-1A</b>
	1800	145T	85.5	1.15	230/460	SSD4B1.5T61	<b>LM24875</b>	H, V	45	467	LT-1E
	1800	145T	<b>84.0</b>	<b>1.25</b>	<b>230/460</b>	<b>SSD4P1.5T61</b>	<b>LM24101</b>	H, V	<b>40</b>	<b>337</b>	<b>LT-1B</b>
	1200	182T	84.0	1.15	230/460	SSD6P1.5T61	<b>LM24876</b>	H, V	80	533	LT-1B
	900	184T	77.0	1.15	230/460	SSD8S1.5T61	<b>LM24238</b>	K	88	682	LT-1A

Prices and data subject to change without notice.

**Product numbers in red are STOCK items.**

**ODP**  
**208, 230/460 & 460 VOLTS • 3-PHASE**  
**FOOT MOUNT AND C-FACE**  
**1/4 TO 500 HP**



**FOOT MOUNT (cont'd)**

HP	SYN RPM	Frame	FL Nom Eff (%)	SF	Volts	Model Number	Product Number	Notes (see page 442)	Approx Shpg Wght (lbs)	List Price	Mult Sym
2	3600	56H	80.0	1.15	230/460	SRD2S2T61	LM24877	H	25	\$412	LT-1A
	3600	145T	84.0	1.25	230/460	SSD2P2T61	LM24100	H	28	448	LT-1B
	1800	56H	81.5	1.15	230/460	SRD4S2T61	LM24106	H	36	349	LT-1A
	1800	145T	85.5	1.25	230/460	SSD4B2T61	LM24169	C, H, W	48	528	LT-1E
	1800	145T	84.0	1.25	230/460	SSD4P2T61	LM24082	H, W	44	363	LT-1B
	1200	184T	85.5	1.25	230/460	SSD6P2T61	LM24237	K, V	74	521	LT-1B
3	900	213T	80.0	1.15	230/460	SSD8S2T61	LM24225	H	106	898	LT-1A
	3600	56H	84.0	1.15	230/460	SRD2S3T61	LM24878	H	33	393	LT-1A
	3600	145T	84.0	1.25	230/460	SSD2P3T61	LM24120	H, W	33	410	LT-1B
	1800	182T	89.5	1.25	230/460	SSD4B3T61	LM24222	H, V	56	540	LT-1E
	1800	182T	86.5	1.25	230/460	SSD4P3T61AP21	LM24177	X	83	396	LT-1B
	1200	213T	86.5	1.25	230/460	SSD6P3T61	LM24200	K, V	104	613	LT-1B
5	900	215T	78.5	1.15	230/460	SSD8S3T61	LM24228	H, Q	134	1,069	LT-1A
	3600	182T	86.6	1.25	230/460	SSD2P5T61	LM24239	H, V	88	461	LT-1B
	1800	184T	89.5	1.25	230/460	SSD4B5T61	LM24202	H, W	91	605	LT-1E
	1800	184T	87.5	1.25	230/460	SSD4P5T61AP21	LM24172	K, V	87	439	LT-1B
	1200	215T	87.5	1.25	230/460	SSD6P5T61	LM24244	K, V	135	805	LT-1B
7 1/2	900	254T	82.5	1.15	230/460	SSD8S5T61	LM24241		175	1,477	LT-1A
	3600	184T	87.5	1.15	230/460	SSD2P7.5T61	LM24181	J, Y	88	635	LT-1B
	1800	213T	91.0	1.25	230/460	SSD4B7.5T61	LM24194	H, V	125	771	LT-1E
	1800	213T	88.5	1.15	230/460	SSD4P7.5T61AP21	LM24173	H, V	121	623	LT-1B
	1200	254T	88.5	1.25	230/460	SSD6P7.5T61	LM24214	K, V	150	995	LT-1B
10	900	256T	84.0	1.15	230/460	SSD8S7.5T61	LM24243	H	167	1,878	LT-1A
	3600	213T	88.5	1.25	230/460	SSD2P10T61	LM24174	H, W	138	796	LT-1B
	1800	215T	91.0	1.25	230/460	SSD4B10T61	LM24193	H, V	155	910	LT-1E
	1800	215T	89.5	1.15	230/460	SSD4P10T61AP21	LM24171	H	138	765	LT-1B
	1200	256T	90.2	1.25	230/460	SSD6P10T61	LM24233	K, W	221	1,286	LT-1B
15	3600	215T	90.2	1.25	230/460	SSD2P15T61	LM24178	H, W	135	1,064	LT-1B
	1800	254T	93.0	1.25	230/460	CCD4B15T61	LM24190	H, V	300	1,323	LT-1E
	1800	254T	91.0	1.25	230/460	SSD4P15T61	LM24175	H, W	215	1,106	LT-1B
	1200	284T	91.7	1.25	230/460	CCD6B15T61Y	LM31244		420	2,145	LT-1E
	1200	284T	90.2	1.25	230/460	SD6P15T61Y	LM13956+		348	1,783	LT-1C
	1200	284T	90.2	1.25	230/460	CCD6P15T61Y	LM29574		350	1,783	LT-1C
20	3600	254T	91.0	1.25	230/460	SSD2P20T61	LM24187	H, W	161	1,340	LT-1B
	1800	256T	92.4	1.25	230/460	CCD4B20T61	LM24199	H, V	350	1,610	LT-1E
	1800	256T	91.0	1.25	230/460	SSD4P20T61	LM24179	A, H, W	233	1,389	LT-1B
	1200	286T	91.0	1.25	230/460	CCD6P20T61Y	LM29575		375	2,523	LT-1C
	1200	286T	91.0	1.25	230/460	SD6P20T61Y	LM13959+		389	2,523	LT-1C
	1200	286T	92.4	1.25	230/460	CCD6B20T61Y	LM30273		462	2,575	LT-1E
25	3600	256T	91.0	1.25	230/460	SSD2P25T61	LM24184	H, Q	200	1,632	LT-1B
	1800	284T	93.0	1.25	230/460	CCD4B25T61Y	LM29576		350	2,259	LT-1E
	1800	284T	91.7	1.25	230/460	CCD4P25T61Y	LM30118		348	1,867	LT-1C
	1800	284TS	91.7	1.25	230/460	CCD4P25TS61Y	LM29937		348	1,867	LT-1C
	1200	324T	92.4	1.25	230/460	SD6B25T61Y	LM13809	C, K	469	3,413	LT-1E
	1200	324T	91.7	1.25	230/460	SD6P25T61Y	LM13749	C, K	469	2,767	LT-1C
30	3600	284TS	93.0	1.25	230/460	SD2B30TS61Y	LM13966	H, M	348	2,608	LT-1E
	3600	284TS	91.0	1.25	230/460	SD2P30TS61Y	LM13954	H, Q	348	2,165	LT-1C
	3600	284T	91.0	1.25	230/460	SD2P30T61Y	LM20099	H, Q	348	2,165	LT-1C
	1800	286T	93.6	1.25	230/460	CCD4B30T61Y	LM29577		400	2,607	LT-1E
	1800	286T	92.4	1.25	230/460	CCD4P30T61Y	LM29923		400	2,165	LT-1C
	1800	286TS	92.4	1.25	230/460	CCD4P30TS61Y	LM29935		400	2,165	LT-1C
	1200	326T	93.6	1.25	230/460	SD6B30T61Y	LM13810	C, K, Q	522	3,852	LT-1E
	1200	326T	92.4	1.25	230/460	SD6P30T61Y	LM13750	C, K, Q	522	3,165	LT-1C

Prices and data subject to change without notice.

+ Discontinued

Product numbers in red are STOCK items.



**ODP**

**208, 230/460 & 460 VOLTS • 3-PHASE  
FOOT MOUNT AND C-FACE  
1/4 TO 500 HP**

**FOOT MOUNT (cont'd)**

HP	SYN RPM	Frame	FL Nom Eff (%)	SF	Volts	Model Number	Product Number	Notes (see page 442)	Approx Shpg Wght (lbs)	List Price	Mult Sym	
40	3600	286TS	93.6	1.25	230/460	SD2B40TS61Y	<b>LM13969</b>	H, N	389	\$3,293	LT-1E	
	3600	286TS	91.7	1.25	230/460	SD2P40TS61Y	<b>LM13957</b>	H, Q	389	2,798	LT-1C	
	3600	286T	91.7	1.25	230/460	SD2P40T61Y	<b>LM18536</b>	H, Q	389	2,798	LT-1C	
	1800	324T	93.6	1.25	230/460	SD4B40T61Y	<b>LM13811</b>	C, P	469	3,235	LT-1E	
	1800	324T	93.0	1.25	230/460	SD4P40T61Y	<b>LM13751</b>	C, H, M	469	2,798	LT-1C	
	1800	324TS	93.0	1.25	230/460	SD4P40TS61Y	<b>LM18540</b>	C, H, M	469	2,798	LT-1C	
	1200	364T	94.1	1.25	230/460	SD6B40T61Y	<b>LM13924</b>	C, P	712	5,428	LT-1E	
	1200	364T	93.0	1.25	230/460	SD6P40T61Y	<b>LM14804</b>	C, K, Q	712	4,374	LT-1C	
	50	3600	324TS	94.1	1.25	230/460	SD2B50TS61Y	<b>LM13812</b>	H, M	469	4,044	LT-1E
		3600	324TS	92.4	1.25	230/460	SD2P50TS61Y	<b>LM13752</b>	H, P	469	3,499	LT-1C
3600		324T	92.4	1.25	230/460	SD2P50T61Y	<b>LM20098</b>	H, P	469	3,499	LT-1C	
1800		326T	95.0	1.25	230/460	SD4B50T61Y	<b>LM13813</b>	C, P	522	3,774	LT-1E	
1800		326T	93.0	1.25	230/460	SD4P50T61Y	<b>LM12831</b>	C, H, M	522	3,165	LT-1C	
1800		326TS	93.0	1.25	230/460	SD4P50TS61Y	<b>LM18542</b>	C, H, M	522	3,165	LT-1C	
1200		365T	94.5	1.25	230/460	SD6B50T61Y	<b>LM13927</b>	K	763	6,127	LT-1E	
1200		365T	93.0	1.25	230/460	SD6P50T61Y	<b>LM14807</b>	C, K, Q	763	5,103	LT-1C	
60		3600	326TS	94.5	1.25	230/460	SD2B60TS61Y	<b>LM13814</b>	H, M	522	4,398	LT-1E
		3600	326TS	93.0	1.25	230/460	SD2P60TS61Y	<b>LM13753</b>	H, P	522	3,814	LT-1C
	3600	326T	93.0	1.25	230/460	SD2P60T61Y	<b>LM18543</b>	H, P	522	3,814	LT-1C	
	1800	364T	95.0	1.25	230/460	SD4B60T61Y	<b>LM14813</b>	C, V	712	4,724	LT-1E	
	1800	364T	93.6	1.25	230/460	SD4P60T61Y	<b>LM14803</b>	H, N	712	3,944	LT-1C	
	1800	364TS	93.6	1.25	230/460	SD4P60TS61Y	<b>LM18725</b>	H, N	712	3,944	LT-1C	
	1200	404T	94.5	1.25	230/460	SD6B60T61Y	<b>LM13944</b>	C, K, P	882	7,029	LT-1E	
	1200	404T	93.6	1.25	230/460	SD6P60T61Y	<b>LM13934</b>	K	882	6,156	LT-1D	
	75	3600	364TS	94.5	1.25	230/460	SD2B75TS61Y	<b>LM14812</b>	H	712	5,964	LT-1E
		3600	364TS	93.0	1.25	230/460	SD2P75TS61Y	<b>LM14802</b>	H, Q	712	5,144	LT-1C
3600		364T	93.0	1.25	230/460	SD2P75T61Y	<b>LM18731</b>	H, Q	712	5,144	LT-1C	
1800		365T	95.0	1.25	230/460	SD4B75T61Y	<b>LM14815</b>	C, H, M	763	5,136	LT-1E	
1800		365T	94.1	1.25	230/460	SD4P75T61Y	<b>LM14806</b>	H, Q	763	4,286	LT-1C	
1800		365TS	94.1	1.25	230/460	SD4P75TS61Y	<b>LM18727</b>	H, Q	763	4,286	LT-1C	
1200		405T	94.5	1.25	230/460	SD6B75T61Y	<b>LM13947</b>	P	958	9,012	LT-1E	
1200		405T	93.6	1.25	230/460	SD6P75T61Y	<b>LM13937</b>	K, Q	958	7,328	LT-1D	
100		3600	365TS	95.0	1.25	230/460	SD2B100TS61Y	<b>LM14814</b>	H, M	763	7,427	LT-1E
		3600	365TS	93.0	1.25	230/460	SD2P100TS61Y	<b>LM14805</b>	H, Q	763	6,223	LT-1C
	3600	365T	93.0	1.25	230/460	SD2P100T61Y	<b>LM20096</b>	H, Q	763	6,223	LT-1C	
	1800	404T	95.4	1.25	230/460	SD4B100T61Y	<b>LM13943</b>	P	882	6,366	LT-1E	
	1800	404T	94.1	1.25	230/460	SD4P100T61Y	<b>LM13933</b>	H, M	882	5,421	LT-1D	
	1800	404TS	94.1	1.25	230/460	SD4P100TS61Y	<b>LM18729</b>	H, M	882	5,421	LT-1D	
	1200	444T	95.4	1.15	460	SD6B100T64Y	<b>LM13815</b>	C, U	1277	10,332	LT-1E	
	1200	444T	94.1	1.15	460	SD6P100T64Y	<b>LM13754</b>	U	1277	8,182	LT-1D	
	125	3600	404TS	95.0	1.25	230/460	SD2B125TS61Y	<b>LM13942</b>	H, M	882	9,546	LT-1E
		3600	404TS	93.6	1.25	230/460	SD2P125TS61Y	<b>LM13932</b>	H, M	882	7,557	LT-1D
3600		404T	93.6	1.25	230/460	SD2P125T61Y	<b>LM20097</b>	H, M	882	7,557	LT-1D	
1800		405T	95.4	1.25	230/460	SD4B125T61Y	<b>LM13946</b>	C, H, M	958	7,709	LT-1E	
1800		405T	94.5	1.25	230/460	SD4P125T61Y	<b>LM13936</b>	C, H, N	958	6,242	LT-1D	
1800		405TS	94.5	1.25	230/460	SD4P125TS61Y	<b>LM18748</b>	C, H, N	958	6,242	LT-1D	
1200		445T	95.4	1.15	460	SD6B125T64Y	<b>LM13816</b>	C, U	1438	11,203	LT-1E	
1200		445T	94.1	1.15	460	SD6P125T64Y	<b>LM13755</b>	C, U	1938	8,871	LT-1D	
150		3600	405TS	95.4	1.25	230/460	SD2B150TS61Y	<b>LM13945</b>	H	958	11,315	LT-1E
		3600	405TS	93.6	1.25	230/460	SD2P150TS61Y	<b>LM13935</b>	H, N	958	8,773	LT-1D
	1800	444T	95.8	1.25	460	SD4B150T64Y	<b>LM13817</b>	C, M	1277	10,299	LT-1E	
	1800	444T	95.0	1.25	460	SD4P150T64Y	<b>LM13756</b>	C, T	1277	8,402	LT-1D	
	1800	444TS	95.0	1.25	460	SD4P150TS64Y	<b>LM18752</b>	C, T	1277	8,402	LT-1D	
	1200	447T	95.8	1.15	460	SD6B150T64Y	<b>LM16236</b>	C, T	1745	14,050	LT-1E	
	1200	445T	95.4	1.15	460	SD6B150T64Y	<b>LM13818</b>	C, U	1438	13,781	LT-1E	
	1200	445T	94.5	1.15	460	SD6P150T64Y	<b>LM13757</b>	C	1438	10,598	LT-1D	

Prices and data subject to change without notice.  
+ Discontinued

Product numbers in red are STOCK items.

**ODP**  
**208, 230/460 & 460 VOLTS • 3-PHASE**  
**FOOT MOUNT AND C-FACE**  
**1/4 TO 500 HP**



**FOOT MOUNT (cont'd)**

HP	SYN RPM	Frame	FL Nom Eff (%)	SF	Volts	Model Number	Product Number	Notes (see page 442)	Approx Shpg Wght (lbs)	List Price	Mult Sym	
200	3600	444TS	95.8	1.25	460	SD2B200TS64Y	<b>LM13819</b>	M	1277	\$13,867	LT-1E	
	3600	444TS	94.5	1.25	460	SD2P200TS64Y	<b>LM13758</b>	N	1277	10,981	LT-1D	
	1800	445T	96.2	1.25	460	SD4B200T64Y	<b>LM13820</b>	C, T	1438	12,667	LT-1E	
	1800	445T	95.0	1.25	460	SD4P200T64Y	<b>LM13759</b>	C, N	1449	9,837	LT-1D	
	1800	445TS	95.0	1.25	460	SD4P200TS64Y	<b>LM18724</b>	C, N	1449	9,837	LT-1D	
	1200	449T	95.8	1.15	460	SD6B200T64Y	<b>LM16239</b>	C, U	2112	16,503	LT-1E	
	1200	447T	95.4	1.15	460	SD6B200T64Y	<b>LM13821</b>	C, U	1745	15,716	LT-1E	
	1200	447T	94.5	1.15	460	SD6P200T64Y	<b>LM13760</b>	C	1745	12,445	LT-1D	
	1200	449T	94.5	1.15	460	SD6P200T64Y	<b>LM16228</b>	C, U	2112	12,445	LT-1D	
	250	3600	445TS	95.8	1.15	460	SD2B250TS64Y	<b>LM13822</b>	N	1438	18,491	LT-1E
3600		445TS	94.5	1.15	460	SD2P250TS64Y	<b>LM13761</b>	U	1438	14,788	LT-1D	
1800		445T	96.2	1.15	460	SD4B250T64Y	<b>LM13823</b>	N	1438	17,738	LT-1E	
1800		447T	96.2	1.15	460	SD4B250T64Y	<b>LM16235</b>	M	1745	18,082	LT-1E	
1800		445T	95.4	1.15	460	SD4P250T64Y	<b>LM13762</b>		1438	13,639	LT-1D	
1800		445TS	95.4	1.15	460	SD4P250TS64Y	<b>LM15466</b>		1438	13,639	LT-1D	
1800		445T	94.5	1.15	460	SD4S250T64Y	<b>LM04479</b>		1380	10,428	LT-1A	
1200		447T	95.4	1.00	460	SD6B250T64Y	<b>LM13824</b>		1745	21,159	LT-1E	
1200		449T	95.4	1.15	460	SD6B250T64Y	<b>LM17958</b>		2112	22,219	LT-1E	
1200		447T	95.4	1.00	460	SD6P250T64Y	<b>LM13763</b>		1745	16,758	LT-1D	
1200		449T	95.4	1.15	460	SD6P250T64Y	<b>LM17955</b>		2112	17,597	LT-1D	
300		3600	447TS	95.8	1.15	460	SD2B300TS64Y	<b>LM13825</b>		1745	21,783	LT-1E
		3600	447TS	95.0	1.15	460	SD2P300TS64Y	<b>LM13764</b>		1745	17,250	LT-1D
		1800	447T	96.2	1.15	460	SD4B300T64Y	<b>LM13826</b>	N	1745	18,359	LT-1E
	1800	449T	96.5	1.15	460	SD4B300T64Y	<b>LM16238</b>	N	2112	19,276	LT-1E	
	1800	447T	95.4	1.15	460	SD4P300T64Y	<b>LM13765</b>		1745	14,399	LT-1D	
	1800	449T	95.4	1.15	460	SD4P300T64Y	<b>LM16227</b>	N	2112	15,438	LT-1D	
	1800	447TS	95.4	1.15	460	SD4P300TS64Y	<b>LM22758</b>		1745	14,399	LT-1D	
	1200	449T	95.4	1.00	460	SD6B300T64Y	<b>LM13827</b>		2112	26,194	LT-1E	
	1200	449T	95.4	1.00	460	SD6P300T64Y	<b>LM13766</b>		2112	21,557	LT-1D	
	350	3600	447TS	95.8	1.15	460	SD2B350TS64Y	<b>LM13828</b>	N	1745	24,658	LT-1E
3600		449TS	95.8	1.15	460	SD2B350TS64Y	<b>LM16237</b>	N	2112	25,891	LT-1E	
3600		447TS	95.0	1.15	460	SD2P350TS64Y	<b>LM13767</b>	U	1745	19,527	LT-1D	
3600		449TS	95.0	1.15	460	SD2P350TS64Y	<b>LM16226</b>	U	2112	20,505	LT-1D	
1800		447T	96.2	1.15	460	SD4B350T64Y	<b>LM13829</b>		1745	23,056	LT-1E	
1800		449T	96.2	1.15	460	SD4B350T64Y	<b>LM17957</b>	U	2112	24,211	LT-1E	
1800		447T	95.0	1.00	460	SD4P350T64Y	<b>LM13768</b>		1745	16,570	LT-1D	
1800		449T	95.4	1.15	460	SD4P350T64Y	<b>LM17954</b>	U	2112	17,734	LT-1D	
1800		447TS	95.0	1.00	460	SD4P350TS64Y	<b>LM15159</b>		1745	16,570	LT-1D	
400		3600	449TS	96.2	1.15	460	SD2B400TS64Y	<b>LM13831</b>	N	2112	28,502	LT-1E
	3600	449TS	95.4	1.15	460	SD2P400TS64Y	<b>LM13770</b>		2112	22,089	LT-1D	
	1800	449T	95.8	1.15	460	SD4B400T64Y	<b>LM13832</b>	U	2112	27,659	LT-1E	
	1800	449T	95.4	1.15	460	SD4P400T64Y	<b>LM13771</b>		2112	20,701	LT-1D	
	1800	449TS	95.4	1.15	460	SD4P400TS64Y	<b>LM22759</b>		2112	20,701	LT-1D	
450	3600	449TS	95.8	1.15	460	SD2B450TS64Y	<b>LM13833</b>		2112	33,989	LT-1E	
	3600	449TS	95.8	1.00	460	SD2P450TS64Y	<b>LM13772</b>		2112	22,969	LT-1D	
	1800	449T	96.2	1.00	460	SD4B450T64Y	<b>LM13834</b>		2112	33,989	LT-1E	
	1800	449T	95.8	1.00	460	SD4P450T64Y	<b>LM13773</b>		2112	22,969	LT-1D	
500	3600	449TS	96.5	1.15	460	SD2B500TS64Y	<b>LM23787</b>		2147	41,122	LT-1E	

**C-FACE WITH FEET**

HP	SYN RPM	Frame	FL Nom Eff (%)	SF	Volts	Model Number	Product Number	Notes (see page 442)	Approx Shpg Wght (lbs)	List Price	Mult Sym
1/3	1800	56C	67.0	1.35	230/460	SRD4S0.33TC61	<b>LM24277</b>	H, W	15	\$263	LT-1A
1/2	3600	56C	66.0	1.25	230/460	SRD2S0.5TC61	<b>LM24879</b>	H, V	18	265	LT-1A
	1800	56C	70.0	1.25	230/460	SRD4S0.5TC61	<b>LM24880</b>	H, W	17	299	LT-1A
	1200	56C	68.0	1.25	230/460	SRD6S0.5TC61	<b>LM24881</b>	H	33	438	LT-1A

Prices and data subject to change without notice.

**Product numbers in red are STOCK items.**